

BOILER HOUSE | EVENTS SPACE

BOILER HOUSE

THE
TRUMAN
BREWERY

BOILER HOUSE | EVENTS SPACE



EVENTS



FASHION
SHOWS



MARKETS



PARTIES



CONFERENCES



EXHIBITIONS



LIVE
MUSIC



LICENSED

ABOUT

The Boiler House is a stunning brick former warehouse dating back to the 1830s. Industrial yet malleable, and with many of its original features intact, the Boiler House is also home to the iconic East London landmark that is the towering 49m Truman chimney. Soaring ceilings, original windows and skylights lend the 10,155 sqft. space an abundance of natural light, whilst mezzanine level and covetable quarry tiled floors make for dynamic layout options for a range of events. Widely recognised as one of the most unique venues in London, the Boiler House has played host to everything from parties, dinners, exhibitions, pop-up markets and product launches through to conferences and intimate trade shows. The Boiler House also benefits from a large courtyard and walled garden primed for summer evenings and outdoor break-outs alike.

ADDRESS

152 Brick Lane, London, E1 6QL

CAPACITY

500

SIZE

10,155 sqft

LEVEL

Street Level

CEILING HEIGHT

6.8m (at lowest), 7.3m (at highest)

BOILER HOUSE | EVENTS SPACE



LOCATION

Boiler House is located on Brick Lane, marking the north east boundary of the former brewery, in one of London's most vibrant and energetic areas. Known throughout London, the iconic Truman chimney and ever-active Estate is frequented by media, creative, fashion and tech industry denizens. The area attracts many thousands of visitors to the bustling work spaces, themed events, weekend markets, eye-popping street art, boutiques, cafes and rich diversity of restaurants.

SERVICES

Boiler House is serviced by 2 sets of double doors on Brick Lane, in addition to a private courtyard and walled garden. The courtyard has the added advantage of backing onto the Brick Lane Yard. The space is also serviced by 3 x male toilets, and 6 x female toilets.

ACCESS

Guest access is via Brick Lane.
Loading Access is via Brick Lane Yard at the rear of the venue.

COMMS

The Truman Brewery's dedicated on-site service provider, TruTec Services, can easily provide support, networking, telephony and internet connectivity to this location.

POWER

4 x 63A 3 Phase C Form Socket.
59 x 32A Single Phase C Form Socket.
43 x Twin 13A Socket.

LIGHTING

House lighting is a mixture of sodium and LED lights. Atmospheric Lighting and Audio package is available at an additional cost.

SUPPLIERS

We recommend the use of the following teams:

EVENT PRODUCTION:

E1 PRODUCTIONS

INTERNET CONNECTIVITY:

TRU TEC SERVICES

SECURITY:

Trusec Security Ltd.
Event Security Services

EVENT CLEANING SERVICES:

The Truman Brewery
Event Cleaning Services





T. PULMAN



P Pay to park
8.30am - 5pm
Pay to park
0001 0001 0005
waiting location
Free
Max stay 2 hours
No vehicles
within 2 hours

P Sunday
8.30am - 5pm
Pay to park 2 hours
No vehicles
within 2 hours

A: 91 Brick Lane, London E1 6QL
 T: 0207 770 6011
 E: monika@trumanbrewery.com

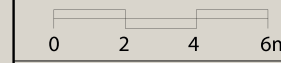
DRAWING NAME
O.GND

SPACE DETAILS
**BOILER HOUSE
 GROUND FLOOR**

VENUE LOCATION
**Block O, Ground Floor
 152 Brick Lane
 London E1 6QL**

LEASE AREA (WITHIN RED BOUNDARY)
6970 SQ FT

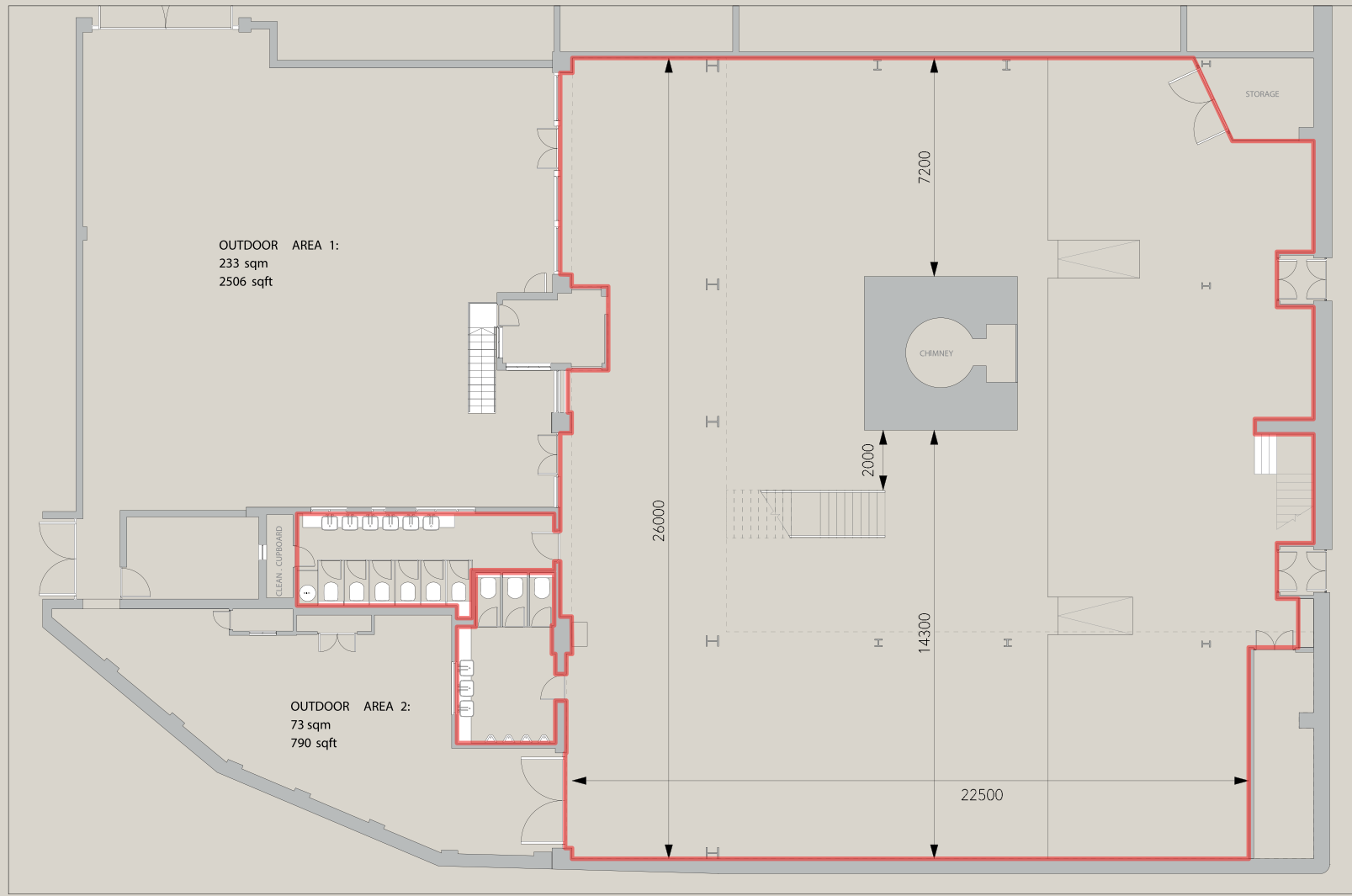
SCALE
1:150 @ A3



NOTES

All measurements are approximate .
 Measurements in millimetres .

**DO NOT SCALE .
 IF IN DOUBT ASK.**



A: 91 Brick Lane, London E1 6QL
T: 0207 770 6011
E: monika@trumanbrewery.com

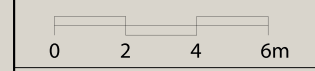
DRAWING NAME
O.MEZZ

SPACE DETAILS
**BOILER HOUSE
MEZZANINE**

VENUE LOCATION
**Block O , Mezzanine
152 Brick Lane
London E1 6QL**

LEASE AREA (WITHIN RED BOUNDARY)
3057 SQ FT

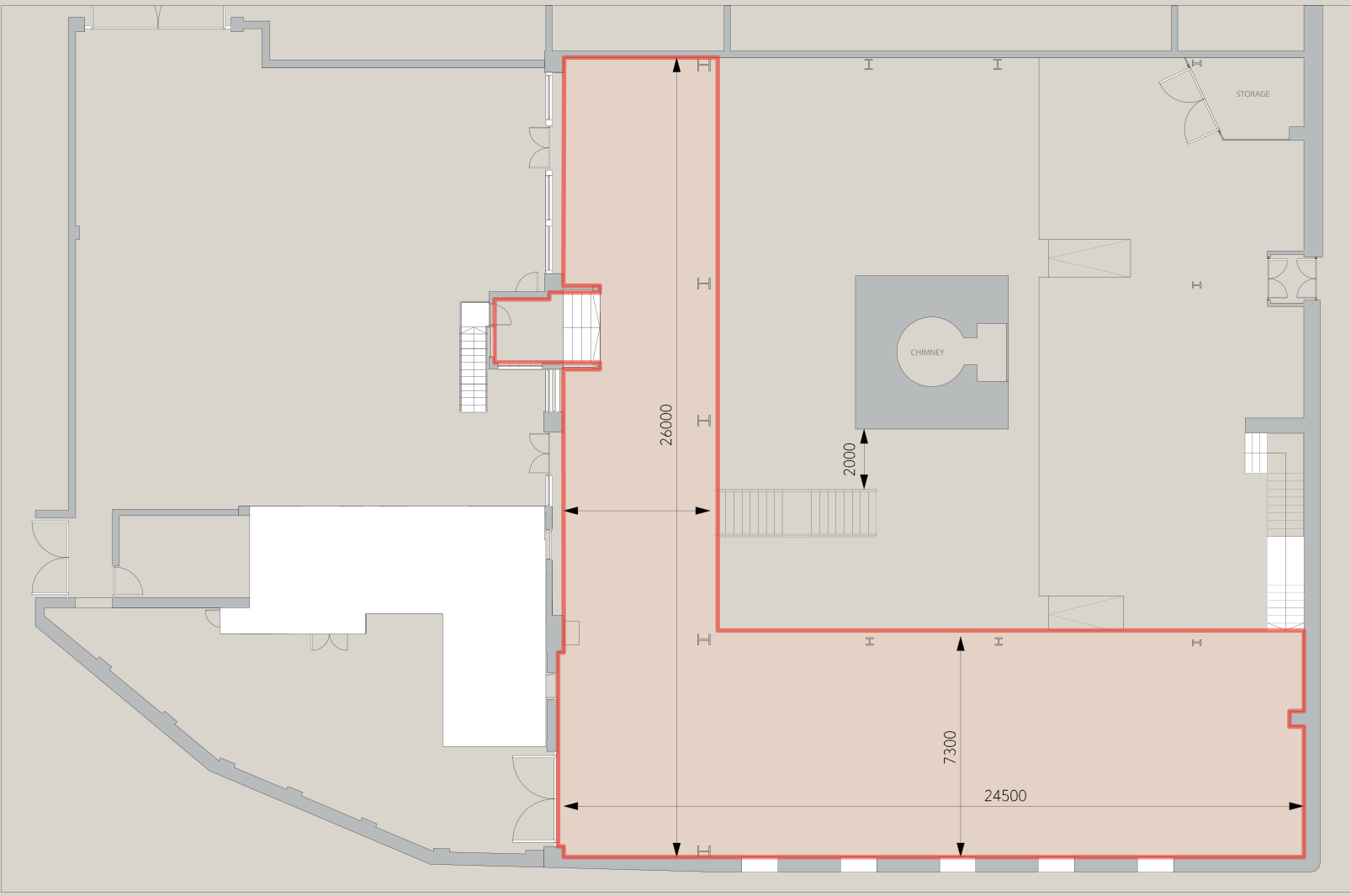
SCALE
1:150 @ A3

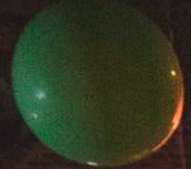


NOTES

All measurements are approximate .
Measurements in millimetres .

**DO NOT SCALE .
IF IN DOUBT ASK .**





Temp Smile

Julien JUNKIEZ
Produits naturels & naturels



TRANSPORT

Boiler House and The Truman Brewery have probably the most central Shoreditch location, and are easily reached by bus, rail, tube or on foot.

The venue benefits from close access to all forms of public transport. Liverpool Street and Shoreditch High Street stations are a short distance away, with Aldgate East within easy reach, offering fast connections across London and beyond.

Liverpool Street Station
Walking distance: 10 min

CENTRAL

CIRCLE

H&C

METROPOLITAN

NATIONAL RAIL

OVERGROUND

Shoreditch High Street Station
Walking distance: 5 min

OVERGROUND

Aldgate East Station
Walking distance: 10 min

DISTRICT

H&C

Whitechapel Station
Walking distance: 15 min

DISTRICT

H&C

OVERGROUND

Contact us to arrange a viewing:

Phone

+44(0)20 7770 6001

Email

events@trumanbrewery.com

Drop in

The Truman Brewery Events Department,
E y's Yard,
15 Hanbury Street,
London E1 6QR